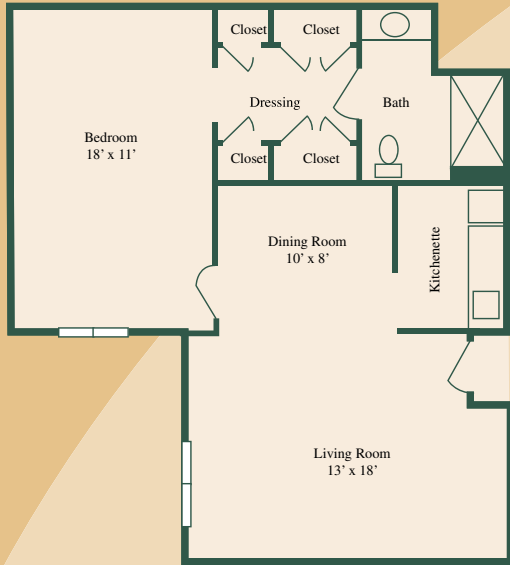


**FLOOR PLAN:**

**Elmington (Luxury One Bedroom)**



**Square Footage: 512 sq.ft.**

**Living Room: 13' x 18'**

**Dining Room: 10' x 8'**

**Bedroom: 18' x 11'**

**Amenities**

**HOME**

- Emergency Response System
- 24-hour licensed nursing supervision
- Full-time Registered Nurse
- Individual thermostat
- Kitchenette with refrigerator

- Walk-in shower
- Complimentary wireless internet service
- Cable TV available
- All utilities including telephone (long distance not included)

**COMMUNITY**

- Fine dining directed by our professional chef
- Private dining rooms for special occasions
- Soda Shop
- TV room
- Salon/Barber shop
- Library
- Automatic front doors
- Beautifully landscaped and enclosed courtyard with gazebo
- Social, recreational, educational, and spiritual activities
- Weekly housekeeping and linen service

- Scheduled transportation to doctor appointments
- Planned outings, shopping, and other events
- Wheelchair accessible bus
- Choice of two sunrooms for leisure activities
- State-of-the-art fire safety system with central alarm and complete sprinkler system
- 24-hour security service and a medical alert system
- Priority placement in The Health Center, if needed
- Respite Care

To learn more about our services visit: [adamsplace.org/AssistedLiving](http://adamsplace.org/AssistedLiving)

To print this page: press Ctrl-P.